



Celeste Alonzo
Coachella

Junior Enterprises LLC

Celeste is a third-generation grower and the general manager of her family's 800-acre bell pepper, sweet corn, green bean, eggplant and potato farm.



Leeann Bettencourt
Santa Maria

Bonipak Produce

Leeann is a senior sales account manager for a vertically integrated growing and shipping operation that supplies more than 22 million cases of fresh produce annually.



Tyler Blackney
Sacramento

Wine Institute

Tyler is the director of legislative and regulatory affairs for a public policy trade association representing approximately 1,000 California wineries and affiliated organizations.



Adrian Calixtro
Selma

Wonderful Orchards

Adrian is the director of irrigation maintenance for the world's largest grower of almonds, pistachios and pomegranates, and for North America's largest vine nursery.



Yezmin Carrasco Valle
Oxnard

Reiter Affiliated Companies

Yezmin is the manager of business process improvement for the world's largest fresh multi-berry producer that grows strawberries, raspberries, blueberries and blackberries.



Mitch Coit
Firebaugh

Marv Coit Inc.

Mitch is the president of a custom farming operation and managing partner of his family's 3,400-acre wheat, corn, almond, pistachio, garlic, onion, tomato and cotton operation.



Kris Costa
Chico

Golden State Farm Credit

Kris is the community outreach manager for a borrower-owned lending and service organization that supports rural communities and agriculturalists through financial services.



Natasha Crivelli
Dos Palos

Chris and Natasha Crivelli Farms

Natasha is a third-generation farmer and owner/operator of a cotton, corn, alfalfa, wheat and almond farm as well as a company that grows, packs and ships melons across the U.S. and Canada.



Rocco Cunningham
Petaluma

R.O. Shelling and Barlas Feeds

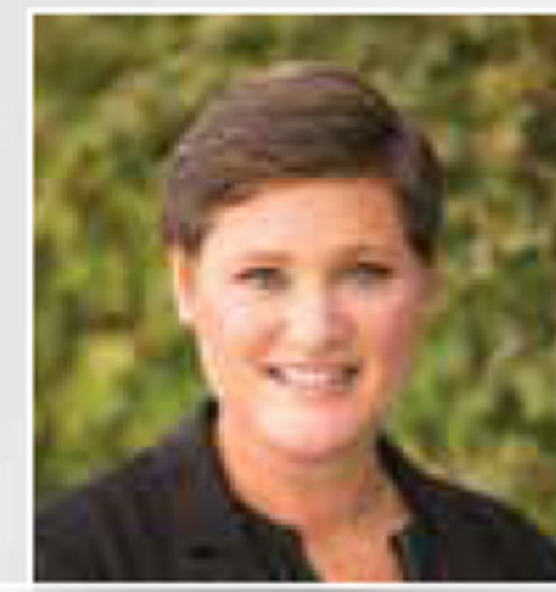
Rocco is a managing partner of a feed mill and a farm supply store which provide quality feed, hay, pet and erosion control supplies to a variety of agricultural businesses.



Brian Gill
Exeter

Gill Cattle and Nielsen Insurance

Brian is a sixth-generation cattle rancher and a sales agent for an insurance company which has served the agricultural community for more than 40 years.



Erin Gorter
Templeton

Cal Poly San Luis Obispo

Erin is a lecturer in the Agricultural Education & Communication Department who teaches courses focused on teacher preparation.



Megan Grima
Yuba City

Stephens Ranch Inc.

Megan is a fourth-generation peach, prune, walnut and watermelon farmer who helps manage two family-owned operations and oversees all farm business activities.



Ted Kingsley Williams

Vann Bros.

Ted is the director of plant operations at a multi-generational, vertically integrated farming enterprise which farms almonds and walnuts in the northern Sacramento Valley.



Lindsey Liebig
Galt

Sacramento County Farm Bureau

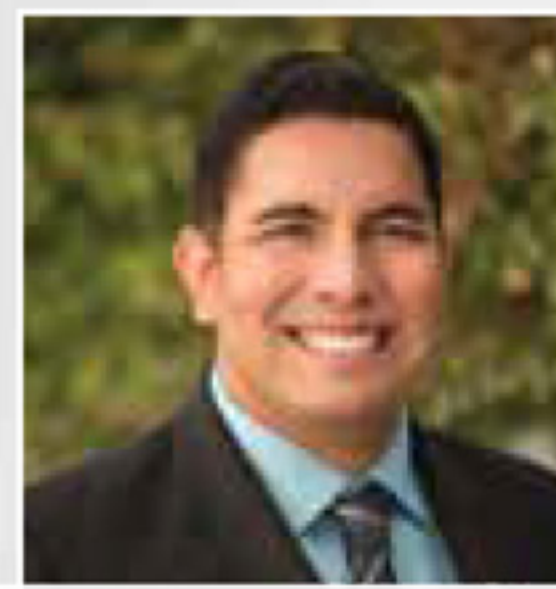
Lindsey is the executive director of a nonprofit organization that represents farmers, ranchers, ag professionals and other members of the community.



Holly Little
Walnut Grove

Acadian Seaplants

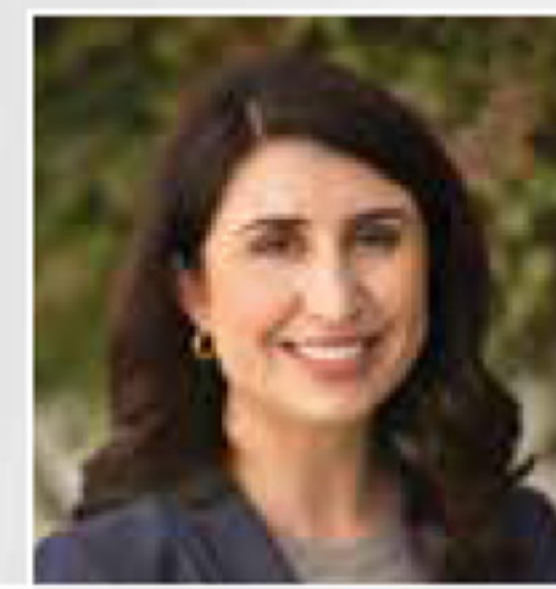
Holly is the director of global commercial science at a company that offers innovative biostimulant and bionutritional crop care products and solutions.



Julian Lopez
Imperial

Imperial County

Julian is the supervisor of the Deputy Agricultural Commissioner Pesticide Use Enforcement Division, which enforces state laws and regulations.



Megan Marques
San Luis Obispo

California Farm Bureau Federation

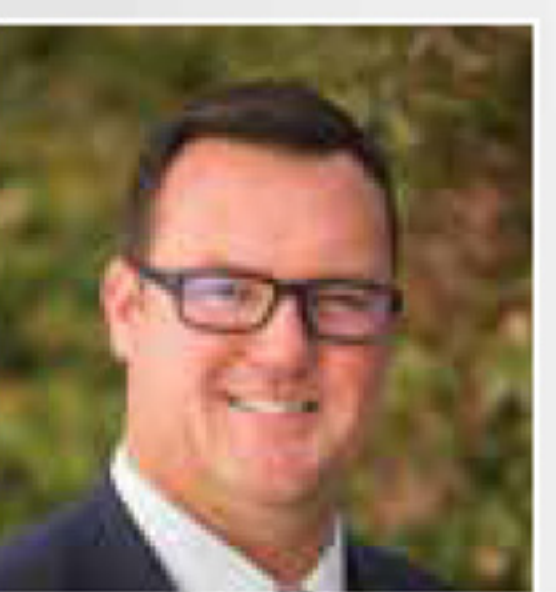
Megan is the member advocacy specialist for an organization that works to protect family farms and ranches on behalf of nearly 36,000 members statewide.



Jonathan Merrill
Salinas

Merrill Farms LLC

Jonathan is a fourth-generation grower and the ranch manager for his family's 7,000-acre lettuce, romaine, broccoli, cauliflower and specialty crop farm.



Michael Newton Stratford

Newton Farms

Michael is a fourth-generation grower and manager of a family farm that grows cotton, tomatoes, wheat, pistachios, dehydrated onions and almonds.



Erin O'Donnell
Arbuckle

The Sun Valley Rice Company, LLC

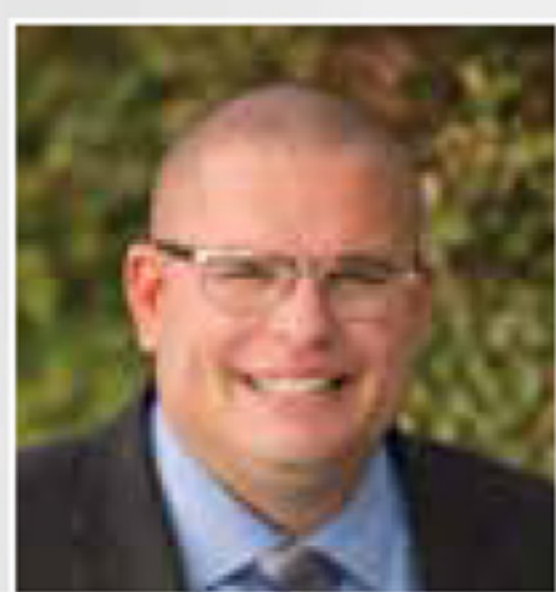
Erin is the assistant vice president of global rice trading for a company that provides innovative rice and food products, services and solutions worldwide.



Brian O'Neill
Fresno

Huron Orchard Services

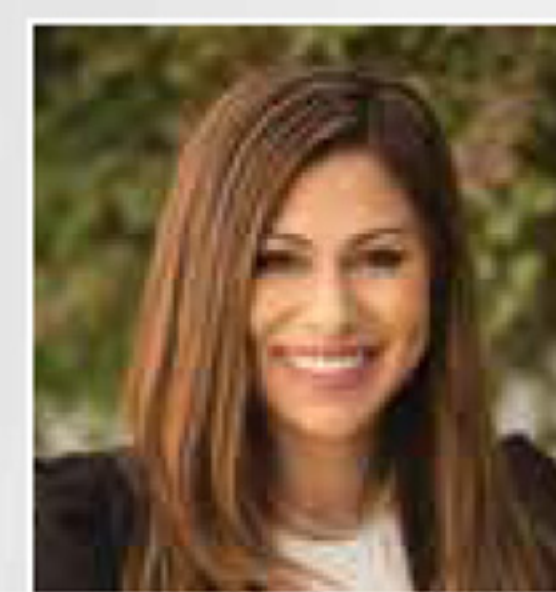
Brian is the owner of a full-service farm management company that farms more than 8,000 acres of pistachios and almonds.



Matt Peyret
Woodland

First Northern Bank

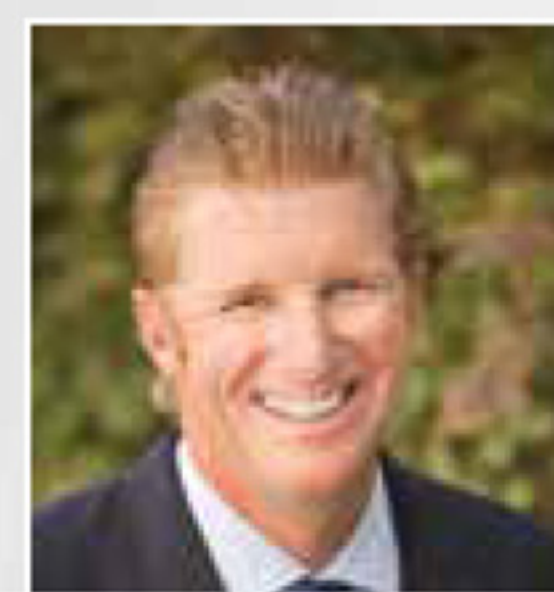
Matt is a vice president at an independent community bank that provides customized financial solutions to agricultural companies.



Priscilla Rodriguez
Fresno

Western Ag Processors Association

Priscilla is the director of food safety at a company which represents processors and hullers of almonds, walnuts, pistachios and pecans throughout California.



Trevor Tagg
El Centro

West-Gro Farms Inc.

Trevor is the vice president of his family's forage, sunflower and hemp farm and owner of a residential and ag property sales and management firm.